



22-May-26

GLOBAL COPPER MARKET PULSE

Global Copper Market:

A product of Bluglance Consulting
Prices, Spreads, Premiums & Strategies

Daily Report

www.bluglance.com



Copper in Local Currencies

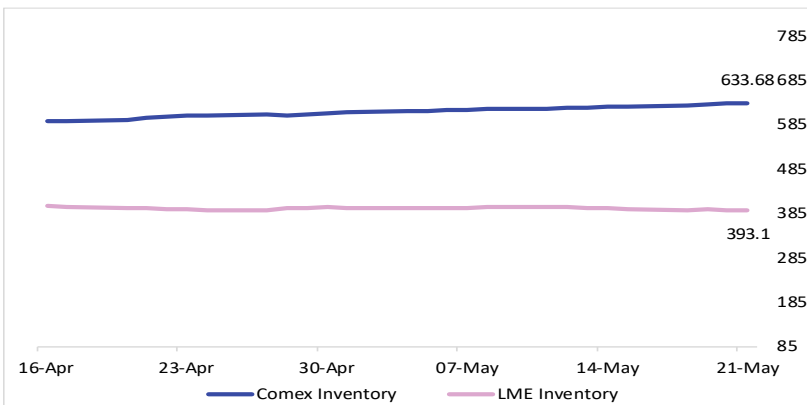
	21-May	20-May	% Change	YTD % Chg.
LME 3M	13516	13656	-1.03	8.79
CME	6.2570	6.2905	-0.53	9.04
MCX	1345.1	1352.1	-0.52	4.96
SHFE	104790	103600	1.15	6.43

Copper in US\$ (Without Duty in MT)

	21-May	20-May	% Change	YTD % Chg
LME 3M	13516	13656	-1.03	8.79
CME	13794	13868	-0.53	9.04
MCX	13982	13963	0.13	-1.94
SHFE	15403	15236	1.10	9.35

Note: Prices Regional Exchange Closing Time

Comex vs LME Global Inventory ('000)



Exchange Inventory

Exchange Inventory (MT)				
	21-May	20-May	Change	YTD Chg.
LME	393100	393400	-300	245675
CME	633680	633039	641	142958
MCX	20-May	19-May	Change	YTD Chg.
	18004	17806	198	15329
SHFE	15-May	08-May	Change	YTD Chg.
	180643	181333	-690	35301
Total	1225427	1225578	-151	439263

Copper Arbitrage Windows

Arbitrage Windows		
	Price	Import
Changjing Price	105420	105420
LME Spot	13455.86	
USDCNY	6.8030	91540
Import Cost (13%)	13731.03	105271
Arbitrage Ratio (LME vs SHFE)		1.0014

If the Arbitrage Ratio >1, imports are Profitable and the arbitrage window is open

If the Arbitrage Ratio < 1, imports are profitable and the arbitrage window is closed

Copper continued to trade in a volatile but resilient range this week, with prices holding firm despite easing geopolitical concerns following the US-Iran truce agreement. **LME copper maintained a broad range of \$13,400–13,750/mt, reflecting steady underlying support from tight nearby spreads and stable physical market conditions.**

The LME cash-to-3M spread remained in a contango of around \$70/mt, indicating no immediate squeeze in nearby supply, while CME copper continued to command a premium of nearly \$280/mt over LME, highlighting persistent tightness in the US market. On the domestic front, MCX calendar spreads stayed around Rs. 17, suggesting balanced near-term positioning.

Physical copper demand globally remains mixed. While some short-term buying interest emerged during price corrections earlier this week, overall industrial demand recovery continues to remain moderate. Market participants remain highly price-sensitive, with procurement activity increasing during dips but slowing at elevated levels. Global visible inventories are broadly steady, offering neither a strong bullish nor bearish trigger at current levels.

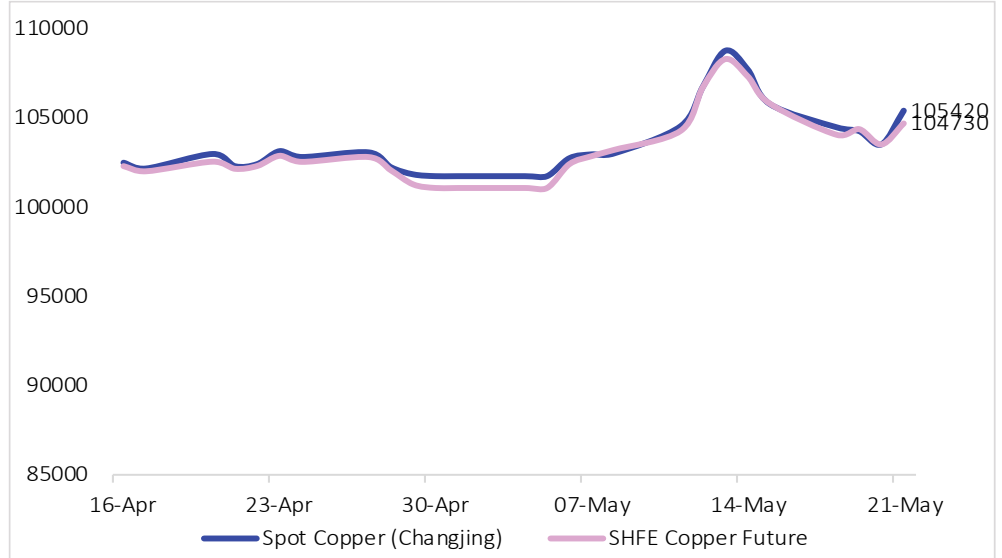
From a market strategy perspective, copper continues to demonstrate strong support near \$13,400, and larger downside risks appear limited unless macroeconomic conditions weaken materially. Volatility may continue in the short term due to speculative positioning and spread movements between LME and CME, but the broader structure of the market remains constructive.

For today and early next week, we maintain a trading range of \$13,400–13,750/mt for LME Copper 3M, with buying interest expected to emerge on declines toward the lower end of the range.

Source: Bloomberg, Bluglance

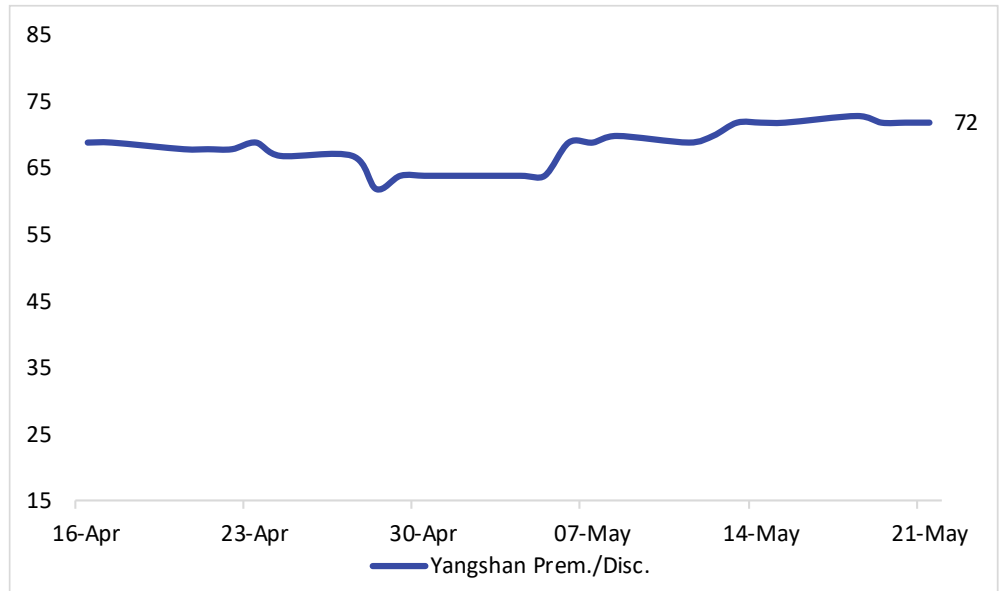
The Chinese spot demand has been higher in recent days, and action is also visible on the SHFE prices. However, the C1 and C2 data set Copper at SHFE holds a Contango of about 70 Yuan/MT amid higher stocks

China Spot Copper Changjiang vs SHFE Copper Fut.



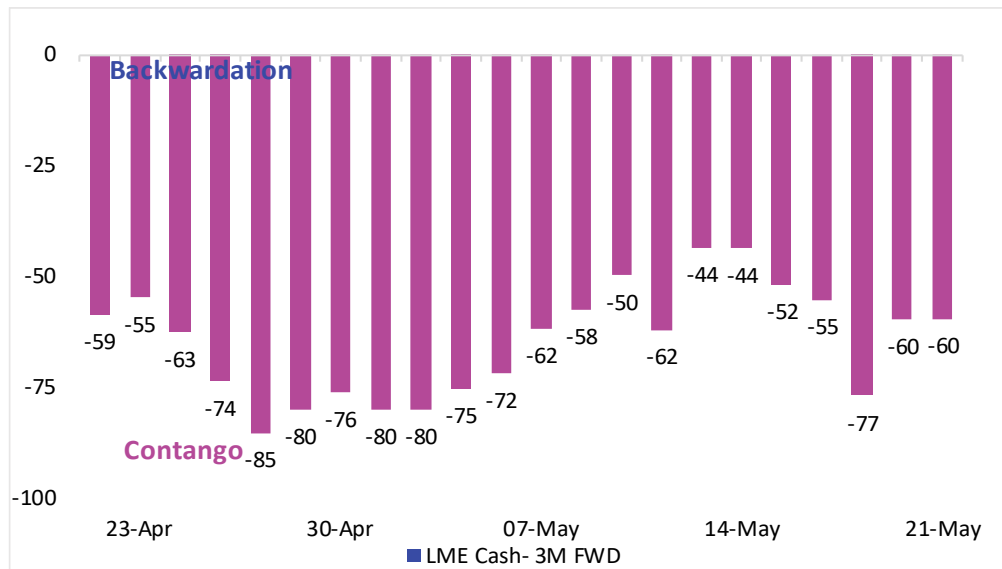
The premium is holding strong above \$72/MT, adding a lot more conviction that copper demand in China is very robust, especially the (ore and concentrate + refined Cu)

Yangshan Copper Prem. / Disc. vs Spot LME Copper



The contango has reduced considerably to \$60/MT, and is likely to remain tight if good demand continues to come from China. Amid the higher inventory, the C structure is still supportive, else we would have been seeing copper in backwardation by now

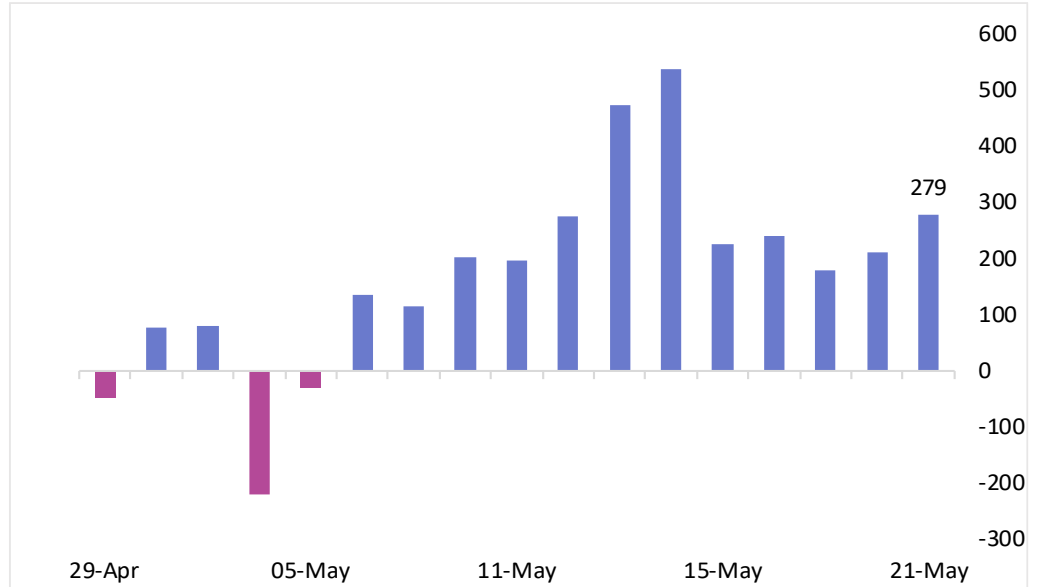
LME Cash - 3M FWD Spread



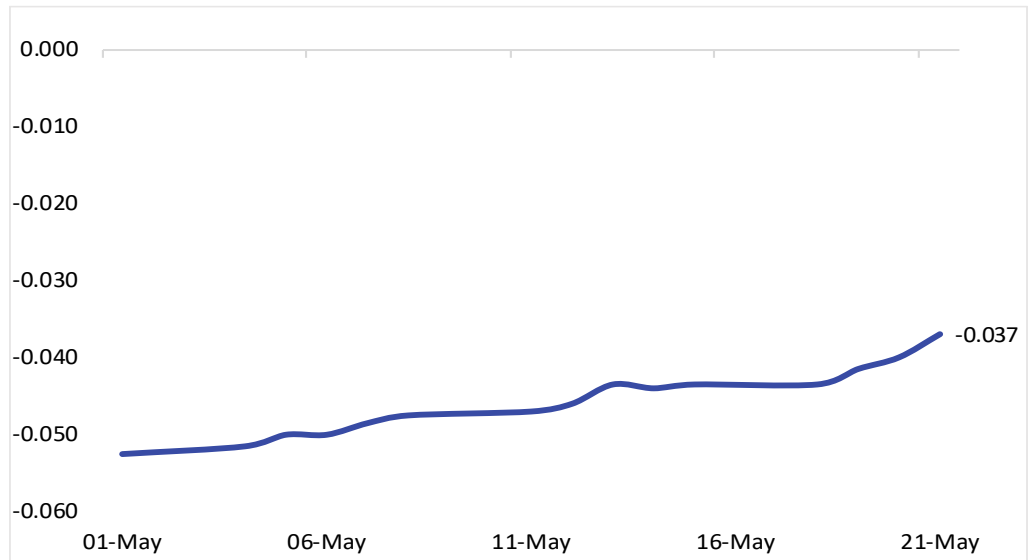
Source: Bloomberg, Bluglance

The Spread The CME-LME 3M spread has surged to +\$279/MT, the highest in the current series. The sharp reversal from negative territory around early May reflects tightening US domestic fundamentals, with COMEX copper now trading at a significant premium to LME, driven by regional demand strength and supply-side constraints expected to contract further

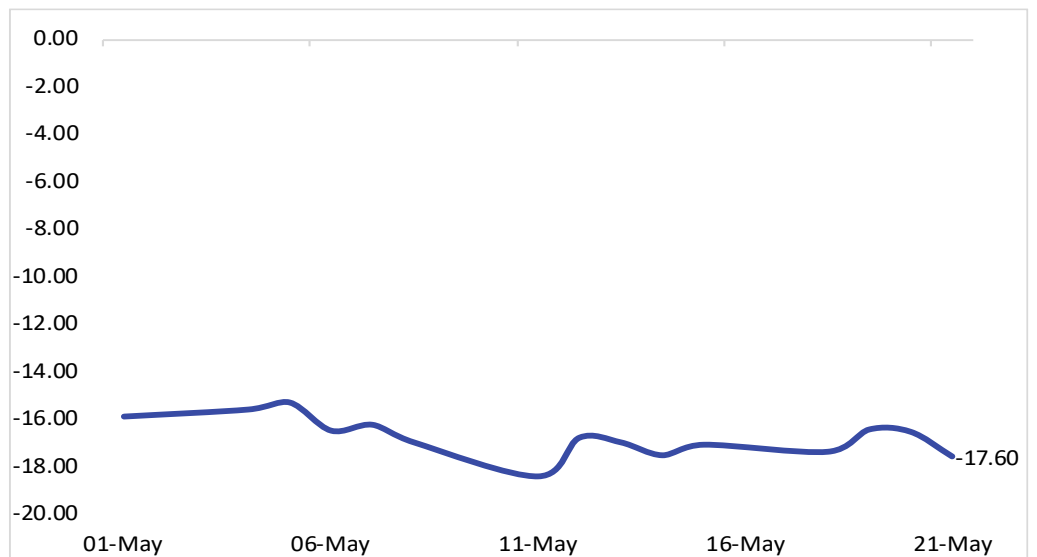
CME Near Month LME 3M Spread (US\$/MT)



CME Near-Next Spread (US\$/lb)



MCX Near - Next Spread (Rs./Kg.)



CME Calendar Spread is in negative/contango no major change in the spread unless stocks gets release

MCX spread is around ₹18 (~14% annualized carry). Despite a drawdown of over 2,000 MT from exchange warehouses, likely driven by domestic consumption, post March delivery outflows remain limited.

Meanwhile, LME–MCX spread dynamics suggest potential fresh stock inflows, as earlier booked import cargoes are expected to arrive and be tendered this month. Going forward, copper spreads will hinge on the balance between warehouse withdrawals and incoming inventories

Source: Bloomberg, Bluglance

Technical Analysis



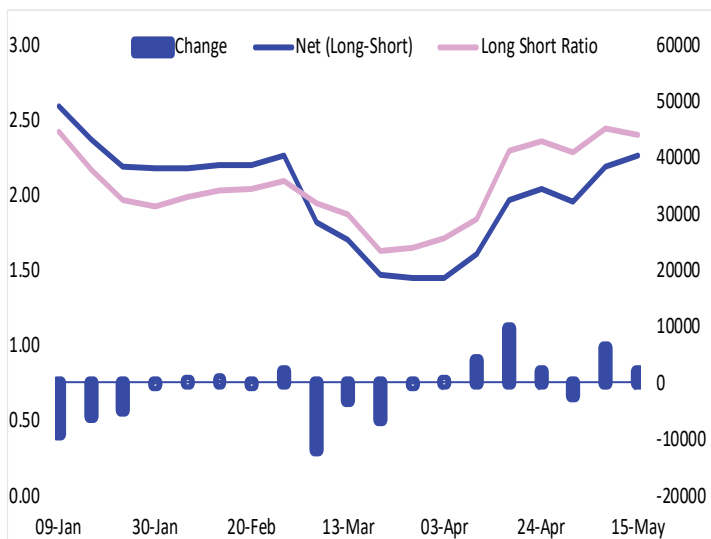
Technical Analysis: Copper closed at 13515, lower by 1.03% on Thursday, the 21st of May, Despite this, the bullishness in the metal is built in due to the fact that it holds very well above the 21 day exponential moving average (13463) and also holding above the broader up sloping channel as seen on the chart. Hence any correction is set to be limited from the current levels and a pullback likely on a sustained trade above key moving average mentioned.

Pivot Levels

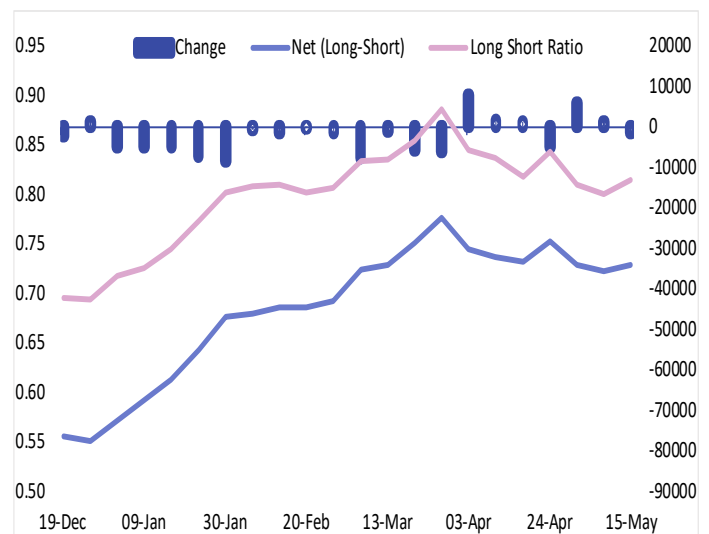
	Open	High	Low	Close	Pivot	Supt.2	Supt.1	Resi.1	Resi.2
LME 3M FWD Copper	13631	13710	13455	13516	13560	13305	13410	13666	13816

LME Commitment of Traders Report (COTR)

Investment Funds COTR



Commercial Undertaking COTR



Source: Bloomberg, Bluglance

Economic Events					
Time	Country	Event	Period	Survey	Prior
19:30	US	U. of Mich. Sentiment	May F	48.3	48.2
20:30	US	Kansas City Fed Services Activity	May	--	3